

you can
Canon

BUBBLE JET PRINTER

PIXMA iP8500

The photographer's printer



OFFICIAL SUPPLIER

Unprecedented colour quality, image clarity and print speeds.

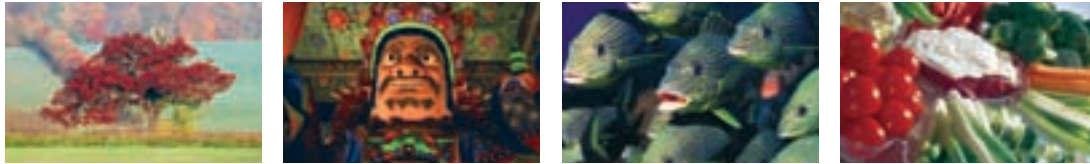


Bring unparalleled colour depth and vibrancy to your photographic work with the PIXMA iP8500, Canon's flagship dedicated photo printer. Radical, space-saving styling is combined with breathtaking print speeds and a range of innovative, time and money-saving features. Plus Canon's exclusive 8-ink ChromaPLUS system enables a wider colour spectrum, to give exceptional richness and intensity to all your photo prints.

ULTRA FAST PRINT SPEEDS

The print speeds of the PIXMA iP8500 are truly amazing, while still delivering superb quality. Print a full A4 photo in a lightning fast 35 seconds. There's rapid borderless printing on 10 x 15cm, 13 x 18cm and A4 sizes. For example, you can produce a glossy 10 x 15cm borderless print in 21 seconds. The iP8500 also features a USB 2.0Hi-Speed interface to transfer data speedily between your printer and computer - so there are no bottlenecks when handling large image files.



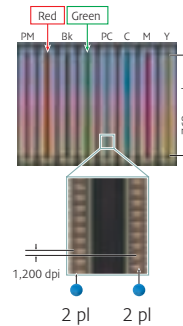
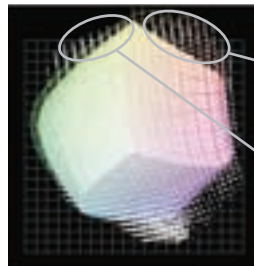


UNRIVALLED PHOTO QUALITY: 8-INK CHROMAPLUS PHOTO SYSTEM

Benefit from a colour range well beyond the reach of conventional printers, with Canon's exclusive 8-ink ChromaPLUS photo system. Additional red and green ink tanks expand the printer's colour gamut significantly, particularly in the yellow to red and green areas, for unprecedented levels of colour saturation and intensity. The result is colour vibrancy and depth approaching the Adobe® RGB colour range commonly used by professional photographers. Combined with Canon's new FINE* print head, this achieves remarkable quality. 6,144 Micro-Nozzles eject permanent 2pl ink droplets with high precision for a maximum 4800 x 2400 dpi resolution, capturing every detail perfectly.

* Full-photolithography Inkjet Nozzle Engineering

Additional red and green inks expand the colour gamut considerably - particularly in the red/orange and green areas where 8 colour is better than 6 colour - giving impressive results that are comparable to positive film.



HIGH-DENSITY PRINT HEAD (CONCEPTUAL DIAGRAM)
A remarkably high number of Micro-Nozzles (768 nozzles x 8 colours: total 6,144) enable high-resolution printing over a wide area in a single pass, thus saving time. Also more drops are ejected in less time, to accelerate print speed further.



CD-R/DVD PRINTING PLUS MORE

The PIXMA iP8500 printer packs more features into less space. You can print image thumbnails or personal designs directly onto compatible CD-R and DVD disks - for a smart, professional finish. An integral duplex unit provides two-sided printing to cut your paper costs considerably. This is especially useful for printing perfect photo albums when using double-sided photo paper. Plus dual paper trays, that fold away neatly, allow high capacity multi-path feeding for both photo and plain paper.



PICTBRIDGE-READY FOR EASY CAMERA DIRECT PRINTING

Print stunning photos directly from your camera quickly and easily - without even using a computer. The PIXMA iP8500 supports PictBridge, the universal standard for direct photo printing from compatible digital cameras and camcorders. It means you can make beautiful borderless prints just moments after your photos are taken.

WASTE-FREE SINGLE INK TANK SYSTEM

Transparent ink tanks for all eight colours can be replaced individually, reducing your costs significantly. Check at a glance when a single tank needs replacing. If there is insufficient ink, an intelligent ink detection system stops a page being printed. It's the easiest way to make sure that you minimise paper and ink wastage.



WINDOWS & MAC COMPATIBLE

The PIXMA iP8500 is compatible with all popular Windows and Macintosh operating systems. To add to convenience, there are two USB ports at the rear of the printer - a standard USB plus a USB 2.0 Hi-Speed interface for extra fast image data transfer.



Specifications PIXMA iP8500

Resolution	Up to 4800 x 2400 dpi
Print engine	8-ink ChromaPLUS Photo system with FINE and Micro-Nozzles ejecting 2 pl drop size permanently
Colour management	ICM, ColorSync, Exif Print
Mono print speed	Up to 17 ppm (Max), 5.3 ppm (Std)
Colour print speed	Text & Graphics: Up to 15 ppm (Max), 4.6 ppm (Std) A4 Full Page: Up to 2.42 ppm (Std)
Photo print speed	A4: in 35 seconds (Max) Borderless 10 x 15 cm: 21 seconds (Max)
Media type	Plain Paper, Envelopes, Photo Paper Pro (PR-101), Photo Paper Plus Glossy (PP-101), Photo Paper Plus Double Sided (PP-101D), Photo Paper Plus Semi-gloss (SG-101), Glossy Photo Paper (GP-401), Matte Photo Paper (MP-101), High Resolution Paper (HR-101N), Transparency (CF-102), T shirt Transfer (TR-301), Photo Stickers (PS-101)
Media weight	Sheet feeder: 64 to 105 g/m ² and supported Canon special media up to 273 g/m ²
Media input	Sheet feeder: 150 sheets Cassette: 150 sheets CD-R / DVD tray: 1 printable CD-R or DVD
CD-R / DVD Printing	Available as standard
Media size	Sheet feeder: A4, B5, A5, Letter, Legal, Envelopes (DL size or Commercial 10), 10 x 15 cm, 13 x 18 cm, Credit Card (54 x 86 mm) Cassette: A4, B5, A5, Letter, Envelopes (DL size or Commercial 10), 10 x 15 cm, 13 x 18 cm
Borderless printing	Available using Photo Paper Pro, Photo Paper Plus Glossy, Photo Paper Plus Double Sided, Photo Paper Plus Semi-gloss, Glossy Photo Paper or Matte Photo Paper in A4, 10 x 15 cm, 13 x 18 cm & Credit Card sizes
Two-sided printing	Available using Photo Paper Plus Double Sided or plain paper in A4, B5, A5, Letter & 13 x 18 cm sizes
Ink cartridge configuration	Single Ink technology - eight separate ink tanks (BCI-6BK, BCI-6C, BCI-6PC, BCI-6M, BCI-6Y, BCI-6R, BCI-6G)
Black ink tank life	210 pages at 5% coverage ¹ 1100 pages (Printing ISO/JIS-SC18 N5 image) ²
Colour Ink Tank(s) life	210 pages at 5% coverage per ink tank ² Cyan: 1100 pages, Magenta: 790 pages, Yellow: 540 pages, Photo Cyan: 380 pages, Photo Magenta: 280, Red: 2300, Green: 2300 (Printing ISO/JIS-SC18 N5 image) ²
PC interface & connectivity	USB and USB 2.0 Hi-Speed ³
Camera interface & connectivity	Direct Print Port: Camera direct photo printing from PictBridge & Bubble Jet Direct compliant digital cameras & camcorders
Camera direct printing	Compatibility: Exif 2.21 or earlier, DPOF compliant

Operating system requirements	Windows: PC with Windows XP, Windows 2000, Windows Me or Windows 98, USB interface*, CD-ROM Drive. Free hard disk space: 50 MB for Windows XP/2000, 15 MB for Windows Me/98. Mac: Macintosh computer with Mac OS 9.x or Mac OS X v10.2.1 or later, USB interface. Free hard disk space: 30 MB for Mac OS 9.x, 100 MB for Mac OS X v10.2.1 or later.		
Driver features	Windows: Photo Noise Reduction, Image Optimizer, Photo Noise Reduction, Vivid Photo Mac: Photo Optimizer PRO, Photo Noise Reduction, Vivid Photo		
Software included	Windows: Easy-WebPrint, Easy-PhotoPrint, PhotoRecord, CD-LabelPrint Mac: Easy-PhotoPrint		
Power source	AC 220-240V 50/60 Hz		
Power consumption	Approx. 1 W (standby), approx. 23 W (printing)		
Temperature range	5 - 35 °C		
Humidity	10 - 90% RH		
Acoustic noise levels	Approx. 34dB (A) (quiet mode)		
Dimensions (W x D x H)	453 x 293 x 170 mm		
Weight	Approx. 7.3 kg		

	Mono print speed measured using this pattern		Colour print speed measured using this pattern		Ink coverage measured using this pattern
--	---	--	---	--	---

¹ Print volume figures may vary with the content of the document and the print mode. Black calculation based on an average of four printers run continuously until ink out printing 1500 characters per page, normal text, in default mode on plain paper using Windows XP and Word 2003.

² Print volume figures may vary with the content of the document and the print mode. Colour calculation based on an average of four printers run continuously until ink out printing the ISO/JIS-SC18 N5 pattern in default mode on plain paper using Windows XP and Photoshop 7.0.

³ USB 2.0 Hi-Speed is supported for Windows 2000, Windows XP and Mac OS X 10.2.7 or later (with in-built USB 2.0 Hi-Speed interface only)

⁴ USB operation can only be guaranteed on a PC with pre-installed Windows XP, Windows 2000, Windows Me or Windows 98

All specifications subject to change without notice.
Print speeds may vary with computer system specifications and content of document printed.
Microsoft, Windows and the Windows logo are trademarks, or registered trademarks of Microsoft Corporation in the United States and/or other countries.
All brand and product names are trademarks of their respective companies.

Specification CEL 1.1.1. 030604

OUTSTANDING PRINT QUALITY COMES WITH CANON MEDIA AND GENUINE INKS



you can
Canon

Canon Inc
www.canon.com

Canon Europa N.V.
www.canon-europe.com

English Edition
© Canon Europa N.V., 2004 (0804)

