

# FS-C8026N

## High volume Colour/ Monochrome A3 Printer

The ECOSYS colour technology is based on extremely durable components. Due to the fact that toner is the only consumable required, ECOSYS printers operate with the lowest cost per page in their class, and they are particularly environmentally friendly. Thanks to their numerous paper options and modularity, all ECOSYS printers can develop to meet further requirements.

### GENERAL

**Technology:** Kyocera Colour ECOSYS  
**Engine speed:** Max. 26/13 pages A4/A3 per minute b/w and full colour, with optional Duplex 24.5 ppm A4  
**Resolution:** 600 x 600 dpi Multi-Bit Technology for optimum colour output  
**Time to first page:** 9 seconds or less  
**Warm-up time:** 179 seconds or less from power on  
**Duty Cycle:** Max. 100,000 pages per month  
**Power Source:** AC 220 ~ 240 V, 50/60Hz  
**Power Consumption:** Printing: 700W, Stand-By: 165W, Power-Saving/ECOpower: 30 W  
**Noise (ISO 7779):** Printing: 53dB(A), Stand-By: 38dB(A), Power-Saving/ECOpower: 35dB(A)  
**Dimensions (W x D x H):** 699 x 715 x 463mm  
**Weight:** Approx. 84.3kg  
**Certifications:** GS/TUV/CE  
This product is produced according to the quality norm ISO 9001 and the environmental guidelines ISO 14001

### PAPER HANDLING

All mentioned paper capacities are based on a paper thickness of max. 0.11 mm. Please use paper recommended by Kyocera under normal environmental condition.

**Input capacity:** 500-sheet universal cassette, 60–105g/m<sup>2</sup>, A5-A3, Letter, Legal, Custom (148 x 210–297 x 420mm)  
150-sheet multi purpose tray, 60–220g/m<sup>2</sup>, 70 x 148–304.8 x 457.2mm  
Max. capacity with options 4,150 sheets

**Output capacity:** 500 sheets with paper full sensor

### CONTROLLER

**Processor:** PowerPC 750Cxe / 600MHz  
**Memory:** Standard 128MB + ECOMemory, Max. 512MB in 2 DIMM slots  
**Emulations:** PCL6 (PCL5e/PCL-XL/PCL5c), KPDL3 (PostScript3 compatible), KC-GL (HP-GL7550A), PDF direct print  
**Controller language:** PRESCRIBE IIc  
**Fonts:** 80 outline fonts (PCL5e/PCL-XL/PCL5c), 1 Bitmap font, 136 outline fonts (KPDL3), 45 types of one dimensional and 1 type of two dimensional barcodes (PDF-417)  
**Print features:** eMPS – for quick copy, proof and hold, private print, job storage and job management functionality with hard disk

### System platform

The FS-C8026N delivers outstanding network connectivity and problem-free system administration. Kyocera's single platform technology means that the same driver can be used for every KM print device in the network: from single-user desktop printers to high-end multifunctional systems. Only Kyocera offers this effortless combination of IT sophistication and high-performance paper handling expertise.

### PRESCRIBE IIe/IIc

With the Kyocera page design and control language PRESCRIBE IIe/IIc, even complex graphics, logos and forms (even multipart forms) can be created independently of the system and saved and updated in the printer. Consequently, integration into print files no longer applies. They are only accessed as required and therefore relieve the load on the network.

### Typefaces and barcodes

The 136 scalable PostScript fonts provide high flexibility for all applications. A total of 45 integrated barcodes including hash totals are computed automatically by the printer and printed in the desired size, alignment and position.

### INTERFACE

**Standard interface:** High speed bi-directional parallel (IEEE 1284), FastEthernet 10/100Base-TX, KUIO-LV Option-Interface slot  
**Multiple interface connection (MIC):** MIC allows for simultaneous data transfer via up to three interfaces with each interface having its own virtual printer.

### OPTIONS

#### Paper handling

**PF-640 Paper feeder:** 500 sheets, 60–105 g/m<sup>2</sup>, A3, B4, A4, B5, A5, Letter, Legal, Custom, max. 2 PF-640  
**PF-645 Paper feeder:** 1,500 sheets in 3 cassettes, 60–105 g/m<sup>2</sup>, A3, B4, A4, B5, A5, Letter, Legal, Custom, max. 1 PF-645  
**PF-647 Paper feeder:** 3,000 sheets A4, B5, 500 sheets A3, B4, A4, B5, A5, Letter, Legal, Custom, 60–105 g/m<sup>2</sup>, max. 1 PF-647  
**DU-640 Duplex unit**  
**DF-600 Document finisher:** 2,000-sheet main tray, staple 50-sheet  
**DF-610 Modular document finisher:** 3,000-sheet main tray, 200-sheet sub tray, staple 50-sheet, 4 modes incl. booklet stapling, hole punch option  
**MT-1 Multi-tray:** 5-bins, 200-/150-sheets (A4/A3) each bin (optional for DF-610/600)  
**BF-1 Booklet folder:** 16-sheets, up to 200 g/m<sup>2</sup> (optional for DF-610)  
**PH-3C Punch unit:** 2/4-hole (optional for DF-610)  
**PT-640 Face up tray**  
**CA-33 Caster kit for PF-640**  
**AK-640A Attachment kit for DF-600/610 with PF-645 or PF-647 (4 trays)**  
**AK-640B Attachment kit for DF-600/610 with PF-640 and PF-645 or PF-640 and PF-647 (5 trays)**

#### Memory

**Printer memory expansion:** 2 slots (64, 128, 256MB DIMM)  
**Compact Flash® card:** 1 slot, forms, fonts and macro storage  
**HD-10 Hard disk:** 20GB, storage of data, forms, fonts + eMPS

#### Optional interfaces:

**IB-11 Serial interface:** RS-232C Serial interface (up to 115.2kbps)  
**IB-21E Network card:** 10/100Base-TX  
**SB-50 Network card:** 10Base-FL, Fiberlink  
**SB-60 Network card:** TokenRing STP/UTP  
**SB-70 Network card:** Wireless LAN – IEEE 802.11b  
**SB-110FX Network card:** 10/100Base-TX / 100Base-FX, FiberOptic

### KM-NET Viewer

KM-NET Viewer is an advanced network management software tool that is compatible with all Kyocera printers and multifunctional products as well as those of other vendors by using the standardized protocol SNMP. The settings of all printers on the network can be checked visually and amended from any Windows PC. KM-NET Viewer also acts as a valuable, real-time early warning system by sending eMail messages.

### CompactFlash® card

The CompactFlash® card offers abundant storage space for typefaces, logos, standard forms and signatures as well as individual API or PRESCRIBE macros.

### Hard disk

The optional hard disk offers even more efficient document management. At the same time it enables the management of print data with eMPS functions such as quick copy, proof and hold, private print and job storage.

### CONSUMABLES

**TK-810Y Toner-kit:** Microfine toner yellow for 20,000 pages with 5% coverage (A4)  
**TK-810M Toner-kit:** Microfine toner magenta for 20,000 pages with 5% coverage (A4)  
**TK-810C Toner-kit:** Microfine toner cyan for 20,000 pages with 5% coverage (A4)  
**TK-810K Toner-kit:** Microfine toner black for 20,000 pages with 5% coverage (A4)

### WARRANTY

1 year on-site warranty as standard. Kyocera guarantees the drums and developers for 3 years or 300,000 pages (whichever occurs sooner), provided each printer is used and cleaned in accordance with the service instructions.



The up to 5 year on-site warranty extension for printer and options.

### MODEL CONFIGURATIONS

**FS-C8026DN** with duplex unit DU-640 as standard  
**FS-C8026DTN** with duplex unit and additional tray  
**FS-C8026HDN** with duplex unit and hard disk



# FS-C8026N

▶ print ▶ copy ▶ scan ▶ fax

# TAKE THE LEAD

with fast mono and colour that you can afford



Your Kyocera Business Partner:

Kyocera Mita (UK) Ltd, 8 Beacontree Plaza, Gillette Way, READING RG2 0BS,  
Tel 0118 923 1500, Fax 0118 931 1108, email info@kyoceramita.co.uk, www.kyoceramita.co.uk

Kyocera Mita does not warrant that any specifications mentioned will be error-free. Specifications are subject to change without notice. Information is correct at time of going to press. All other brand and product names may be registered trademarks or trademarks of their respective holders and are hereby acknowledged.



# HIGH COLOUR PRODUCTIVITY WITH LOW RUNNING COSTS

Colour is becoming more and more important in today's business. You've experienced it yourself: in a competitive market, colour documents get more attention. Colour presentations make more impact. Invoices in colour get paid earlier. There's no doubt that colour is a powerful tool for highly effective communications. But colour printing also brings the danger of increasing running costs. How can you get the advantages of colour business communications, without being burnt by high costs for printing?

## KYOCERA'S UNIQUE ECOSYS TECHNOLOGY GIVES YOU COST-EFFECTIVE COLOUR

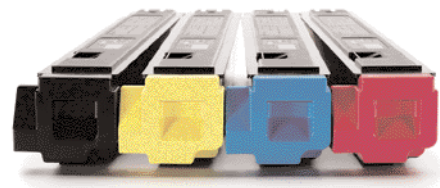


Thanks to decades of extensive research and development, Kyocera is able to bring you colour printing technology that delivers real cost savings. Kyocera's proven ECOSYS technology – with its focus on ECONomy, ECOlogy and SYStem – eliminates the high, locked-in costs and maintenance demands of conventional printers. Our renowned reliability means you worry less about maintenance, and spend more time being productive. Our long-life ceramic components last much longer than conventional systems, so you save money on consumables. And you help the environment too, because Kyocera colour printers produce much less waste. Thanks to ECOSYS, the FS-C8026N sets the benchmark for economical, worry-free colour printing.

## FAST COLOUR PRINTING YOU CAN COUNT ON

Meet the exceptional new FS-C8026N from Kyocera. This high-powered A3 colour printer delivers high-productivity colour and unbeatably low running costs. Its fast engine produces results in colour and monochrome at the same high speed: 26 ppm (A4). Even using the optional automatic duplex, the FS-C8026N keeps up the pace.

And with a first-print time of 9 seconds, the FS-C8026N means you'll be spending less time waiting and more time producing. Eliminate the worry of a colour-costs explosion with the proven expertise of the FS-C8026N and Kyocera.



Brilliant colour without high running costs: each colour toner container can be individually replaced as required

# FS-C8026N



## NETWORK CONNECTIVITY THAT DRIVES YOUR WORKGROUP EFFICIENCY

Your office will benefit from the excellent connectivity of the FS-C8026N. The standard parallel port and FastEthernet interface on the FS-C8026N assure effortless professional networking. The Multiple Interface Connection features let you transfer data simultaneously via up to three

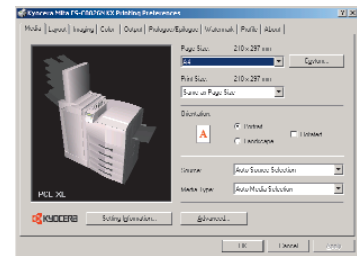


interfaces – each with its own virtual printer – using the innovative Multiple Interface Connection (MIC). And when you wish to configure a system tailored to your individual network needs, the FS-C8026N has a great range of flexible network options. For added network functionality, select from the range of professional networking options – including Internet Printing Protocol (IPP), fibre optic interface, a CompactFlash slot, Wireless LAN capabilities – and exploit the outstanding connectivity and high-speed convenience of the FS-C8026N.

Select exactly the network interface you need from the wide range of network options

## CONVENIENT ADMINISTRATION

The FS-C8026N is a professional colour-printing device designed to make your business run more efficiently. Ease of administration and management is important for smooth productivity. Like the



KX Driver, all Kyocera devices run on a universal platform. That means you use one familiar interface to set up your FS-C8026N, with less need for training and fewer errors. The KM NetViewer shows you your network at a glance: the Kyocera NetViewer helps you cut network administration costs by providing a single, centralised control interface for every Simple Network Management Protocol (SNMP) device in your network.



E-mail warnings for low toner or paper levels are automatically sent from the FS-C8026N to the IT manager's PC, reducing expensive downtime significantly. Reliable and easy to use: the FS-C8026N lightens your administrator's workload.

## POWERFUL JOB MANAGEMENT

The FS-C8026N has a high-performance PowerPC 750Cxe processor and 128MB memory as standard, enabling fast, reliable processing of complex colour-printing jobs. With the installation of the optional 20GB hard disk drive (HD-10), the Enhanced Multiple Printing System (eMPS) functionality becomes available. The optional eMPS brings a new level of convenience, efficiency and security to your office printing.

## EMPS FEATURES

**Quick Copy** delivers extra speed and convenience in a busy office. The data of recently printed documents remains on the printer temporarily. Documents can be re-printed directly, without needing to be sent over the network again, minimising network traffic.

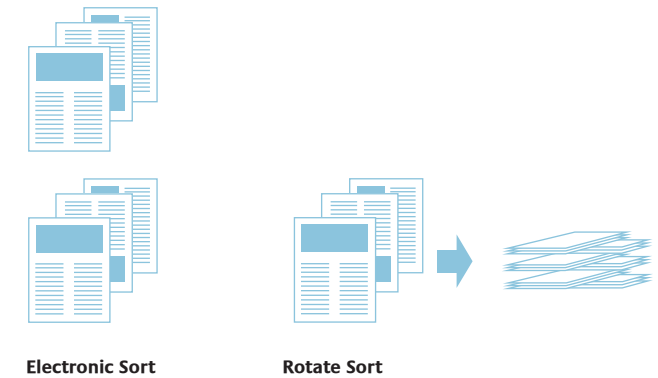
**Job Storage** saves data for commonly used documents permanently on the hard disk. Documents can be printed directly from the FS-C8026N, again reducing network traffic.

**Sample Print** enables the first copy to be checked for errors before the entire job is printed. Expensive misprints and the associated waste of toner and paper are effectively prevented.

**Private Print** provides added security for confidential documents. Private Print jobs are only released for printing after you enter your personal password via the printer operation panel. After printing the data is immediately deleted from the hard disk.

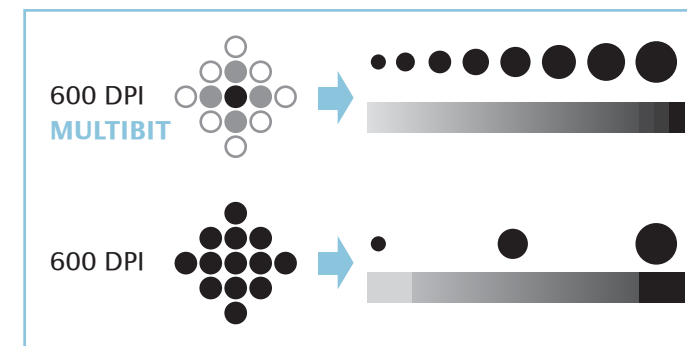
**Virtual Mailbox** offers each member of your team a convenient, personalised storage space on the hard disk itself, where document data can be stored and called up as needed.

**Electronic Sort Mode and Rotate Sort Mode** enhance the functionality of the optional paper feeders. Even if the cassettes are set to portrait, for example, the orientation of individual pages can be changed to landscape. The end result is the same – print jobs are not confused in the finisher.



## EXCELLENT PRINT QUALITY

You demand quality in all your business communications. That's why the FS-C8026N offers Kyocera's proven multibit technology to deliver outstanding levels of image quality. With the equivalent of 1,800 dpi, text is clearer, shading is finer, colours are richer. And thanks to the FS-C8026N's oil-free fusing technology and gloss control system, you can create colour documents that have exactly the level of matt or gloss you desire.



Finer gradations of colour and shading thanks to Colour Multi-Bit technology

## ADVANCED DOCUMENT MANAGEMENT

Your workgroup faces changing demands. So your colour printer needs to be able to adapt with speed and flexibility. The FS-C8026N offers an exceptional range of paper-handling and document-finishing capabilities. Its intelligent modular design lets you configure exactly the system you need to meet your print requirements.



The FS-C8026N with PF-647 paper feeder, plus DF-600 document finisher

### Standard input features

The FS-C8026N comes with one 500-sheet universal paper cassette as standard, ready for a range of different media: from A5 up to A3, letter, legal or custom-sized paper. The versatile multipurpose tray is also standard, and lets you print on heavy stock up to 220g/m<sup>2</sup> – perfect for booklet covers and face sheets.

### High-volume finisher

The FS-C8026N enables you to produce impressively finished colour and monochrome documents with the press of a button – even in high volumes. Add the 2,000-sheet finisher (DF-600) to stack and to staple your output, or select the powerful, 3,000-sheet modular document finisher (DF-610) to booklet-staple. Hole-punching is facilitated by the optional PH-3C/D unit and you can create professional-looking booklets with the BF-1 booklet folder option.



The DF-610 document finisher with MT-1 mailbox sorter and BF-1 booklet folder

### Flexible paper feeders

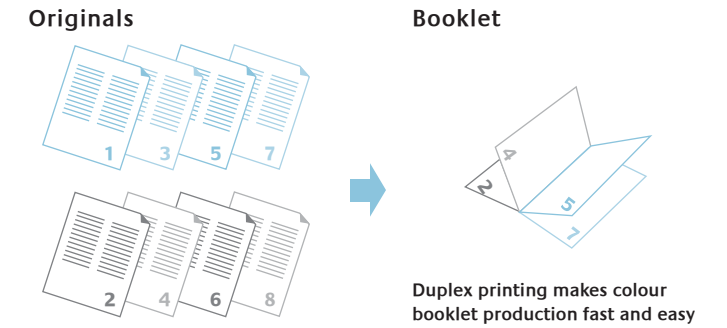
Enhance the flexibility of the FS-C8026N by adding up to two extra 500-sheet paper cassettes (PF-640) or the 1,500-sheet paper feeder (PF-645). With access to up to six different paper sources, you can create impressive documents on a range of media at the press of a button – without needing to manually change paper cassettes.



The PF-645: 1,500 sheets from three sources

### Automatic duplex

The speedy FS-C8026N barely slows its pace even when using the optional double-sided printing function (DU-640). At 24.5 images per minute on A4 in colour and monochrome, you get the full paper-saving benefits of duplex without any significant loss in productivity.



### High-capacity input

For high-volume printing, select the optional 3,000-sheet paper feeder (PF-647) and expand the total capacity to an enormous 4,150 sheets. With its high capacity, speedy engine and best-in-class cost per page, the FS-C8026N is ideally suited to large print jobs.

## FS-C8026N

FEATURE	ADVANTAGE	BENEFIT
26ppm in A4 13ppm in A3 in colour or b/w	High-speed colour and/or monochrome document output	Lets you work faster; handles high-volume jobs
Time to first page: 9 seconds or less	Immediate print-out of your documents	Gives you more time for other tasks
FastEthernet network interfaces standard	No additional network card is needed	Saves money and allows a team to share resources and information
128MB RAM and optional 20GB hard disk	Ability to handle complex tasks; enables advanced digital functions of eMPS	Speeds up your workflow and productivity
650-sheet paper capacity, upgradeable to 4,150 sheets	Fewer paper refills required, additional paper supply for the machine	Increases efficiency and handles high-volume colour or monochrome jobs with ease
Optional document finishers holds up to 3,000 sheets; booklet functionality	Large print runs require minimal user interaction; automatic finishing	Creates impressive business documents while you work on other tasks
ECOSYS technology	Long-life components	Saves time and money with reduced downtime and maintenance costs, as well as being environmentally friendly