

**XEROX**<sup>®</sup>

Technology | Document Management | Consulting Services

Phaser<sup>®</sup> 6300

Phaser<sup>®</sup> 6350



colour laser printers

# Satisfy your need for Speed



# Phaser® 6300 / 6350

## Colour Laser Printers



### Super-fast speed.

Sharp, accurate colour. And enhanced productivity features that will put your business ahead of the competition.



### From really fast to really, really fast

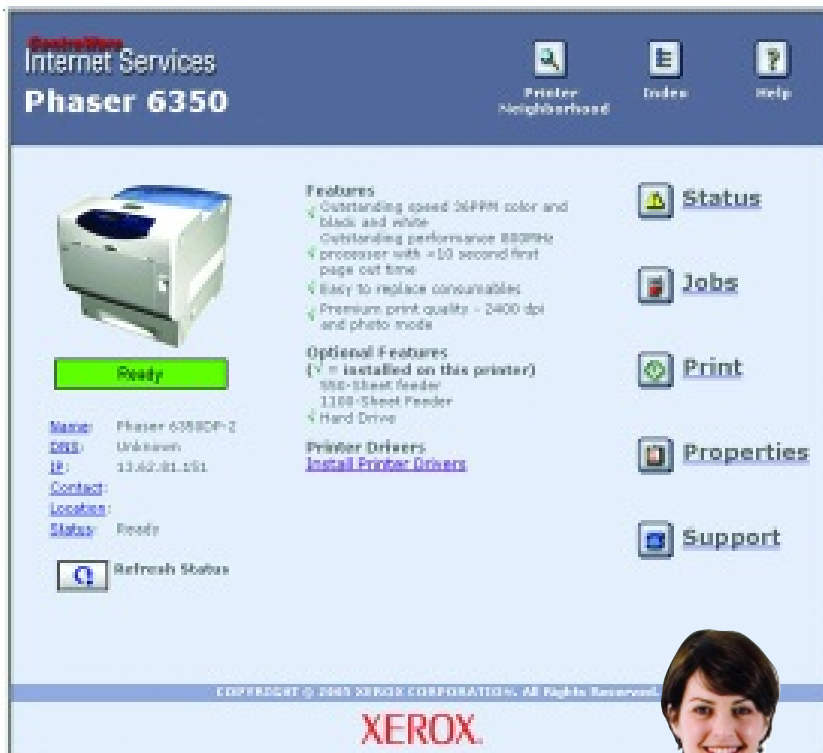
Real speed is measured in performance, and these printers deliver. Choose how much speed you need – up to an incredible 35 ppm in colour. The Xerox Phaser 6300 / 6350 printers offer outstanding printing performance, with powerful features to keep users in the fast lane.

- Finish projects with time to spare. With colour speeds up to 25 or 35 ppm, you can output business-quality colour prints up to 63% faster than our leading competitors.
- Speed through the toughest jobs. An 800 MHz Power PC processor keeps even your largest projects moving faster than anything else in the category.
- Forget about waiting. First-page-out time in colour is as fast as 10 seconds with the Phaser 6350, as fast as 12 seconds with the Phaser 6300.
- Change gears as needed. Selectable print modes give you time- and money-saving options for general office uses, plus premium, high-resolution colour on demand.

### Speed made simple

Using the Phaser 6300 / 6350 printers is incredibly easy thanks to advanced, user-friendly tools specifically designed to enhance productivity and make it easier for workgroups to keep up with the speed of today's business.

- Save time. Our Smart Tray feature provides real-time printer and paper tray status at the user's desktop – showing available media types and sizes – and automatically selects the correct tray.
- Reduce downtime. The Phaser 6300 / 6350 printers send email alerts when consumables like toner or media run low.
- Eliminate delays. The PrintingScout® alert feature constantly monitors all print jobs, and uses pop-up windows to inform users right away of any trouble. Pop-up windows include illustrated instructions on how to fix the problem easily.
- Manage remotely. The CentreWare® IS embedded web server allows you to manage, configure and troubleshoot your Phaser printer from any location on the network using a web browser.



## Power to share

No more worries about heavy printing volume or complex print jobs slowing down your workgroup. From small teams to large departments, the Phaser 6300 / 6350 printers include powerful tools to meet any demand for fast, high-resolution colour.

- Keep moving. With paper input capacity of 2,350 sheets and a duty cycle up to 120,000 pages per month, you can meet even the largest department's needs.
- Keep growing. Built-in networking capability enables easy user access to any connected printer.
- Track group use. The Usage Analysis Tool makes it easy to collect, organise and analyse data – even for large workgroups using multiple Phaser printers.
- Stay organised. The Personal Print feature separates and stores jobs, keeping outputs from intermixing and enabling each user to print all their processed jobs at one time.
- Reduce page cost. For larger workgroups, optional high-capacity toner cartridges provide the best cost-per-page value.



## High-performance colour

Yes, they're fast. But with premium image quality and deep, defined colour print after print, the Phaser 6300 / 6350 printers also meet your most demanding business colour requirements:

**Brilliance** 2400 dpi provides richly detailed colour that makes your images jump right off the page.

**Accuracy** True Adobe® PostScript® 3™ and improved controls deliver accurate colour, right out of the box. New colour controls also allow users to make precise adjustments for custom applications.

**Consistency** A single-pass print system with automatic adjustments provide consistent performance throughout long print runs.

## Flexible paper handling

- ① Use Tray 1 (MPT) for heavy paper up to 216 gsm, envelopes, labels, business cards and other specialty media (up to 150 sheets).
- ② Tray 2: 550-sheet paper tray (standard) feeds 65–163 gsm paper and transparencies.
- ③ An additional 550-sheet paper feeder is available (standard on the 6350DT configuration).
- ④ ⑤ A high-capacity feeder (standard on our most productive configuration, 6350DX) adds two trays with 1,100 sheets of input capacity.

Money-saving and fast automatic duplex option for two-sided printing (standard on 6300DN, 6350DP, 6350DT, 6350DX configurations).





CONFIGURATIONS	Phaser 6300N	Phaser 6300DN	Phaser 6350DP	Phaser 6350DT	Phaser 6350DX
<b>Speed</b>	Up to 25 ppm colour / 35 ppm black and white		Up to 35 ppm colour / 35 ppm black and white		
<b>Duty Cycle</b>	Up to 100,000 pages / month		Up to 120,000 pages / month		
<b>Paper Handling</b>	Tray 1 (MPT): 150 sheets, Tray 2: 550 sheets (Total 700 sheets)				
Paper input	Standard			Additional 550 sheet Feeder tray (Total 1,250 sheets)	1,100-sheet high-capacity feeder (Total 1,800 sheets)
Automatic 2-sided printing	NA	Standard	Standard		
<b>Print</b>					
First page out time	As fast as 12 seconds (colour)		As fast as 10 seconds (colour)		
Maximum Resolution	2400 dpi				
Processor	800 MHz PowerPC				
Language Support	Adobe® PostScript® 3™, PCL 5c				
Connectivity	USB 2.0, 10/100BaseTX Ethernet				
Memory (Std / Max)	256 MB / 1 GB		256 MB / 1 GB	512 MB / 1 GB	
Internal hard drive	Optional		Optional		Standard
Print features	Embedded Web Server, Remote Printing, Email Alerts, Enhanced PrintingScout®, PhaserSMART®, RAM Collation, Job Accounting, Usage analysis Tool, Booklet Printing, Smart Trays, Banner-size Printing				Proof / Secure / Saved / Personal Print, PDF-Direct Print, Disk Collation, Extended Font Storage
<b>Warranty</b>	One Year Onsite Warranty**				

\*\*Products purchased under a "PagePack" agreement do not carry a warranty but please refer to your service agreement for full details of your enhanced service package.

## SPECIFICATIONS

### Network/Software

**Printer management** CentreWare IS Embedded Web Server, CentreWare Web, Xerox NDPS Gateway, Usage Analysis Tool

**Font capabilities** 139 Resident PS fonts and 81 PCL fonts

**Printer drivers** Windows® 98SE/Me, Windows NT 4.0 (SP6), Windows 2000/XP, Windows Server 2003, MacOS 9.1, MacOS X version 10.2 or higher, Novell Netware 5.x/6.5, Linux Red Hat 9, Suse 9, Fedora Core 1, UNIX Sun Solaris 2.8, 2.9, 2.10, HP/UX 11.x, IBM AIX 4.3.3, Xerox Walk-Up Printing Drivers with Windows 2000 or higher

**Language Support** True Adobe® PostScript® 3™, PCL 5c

### Paper Handling

**Maximum input capacity:** 2,350 sheets

**Tray 1 (MPT): standard:** 150 sheet capacity. 65 – 216 gsm supports a wide range of papers, envelopes, cover stocks, labels, business cards, transparencies, and more. Media sizes: A4, A5, B5 JIS, Executive, Statement, US Folio, A/Letter, Legal, Custom sizes: width: 90 – 220 mm; height: 140 – 900 mm

**Tray 2: standard:** 550-sheet capacity. 65 – 163 gsm supports a wide range of papers, labels, glossy coated papers and transparencies. Media sizes: A4, A5, B5 JIS, Executive, Letter, Legal, US Folio

**Tray 3: standard on 6350DT:** Capacity, media types and sizes same as Tray 2

**Trays 4 – 5: standard on 6350DX:** 1100-sheet High-Capacity Feeder. Media types and sizes same as Tray 2

**Automatic 2-sided printing:** 65 – 163 gsm from all trays

**Maximum output capacity:** 250 sheets

### Special Features

**Enhanced PrintingScout®** Instantly displays pop-up Help if attention is needed throughout print job

**Phaser Installer** Automatically gets you printing in minutes. Supports scriptable install and silent install which allows easy driver installation from a centralized, remote location

**PhaserSMART®** Printer diagnostics and troubleshooting via an automated Internet-based support system

**Smart Trays** Provide real-time printer and paper tray status on users' PC desktop

**Productivity tools** Personal Print®, Driver Colour Control, Support Centre, Usage Analysis Tool, Secure Print®, Proof Print®, Saved Print®, Booklet printing, Negative and mirror images, Scaling, Watermarks, Custom size paper, Run black, Cover pages, RAM Collation, Disk Collation®, Remote printing, Separation pages, N-Up printing, PDF-direct printing®, Configuration card, Silent install, Scriptable install, Saved job repository, Email alerts, Job completion notification

\*Requires hard drive

### Colour Controls

**Colour standards** PANTONE®-approved solid-colour simulations, Adobe® PostScript® device-independent colour, CIE international colour standards, and support for TekColor, ICC and Apple® ColorSync® colour management systems

**Selectable print quality modes** Standard (default): 1200 x 600 dpi; Enhanced: 2400 x 600 dpi; Photo: 1200 x 1200 dpi

**Colour correction modes** Automatic, sRGB, Display, sRGB Vivid, None, SWOP Press, Euroscale Press, Commercial Press, SNAP Press, Black and White

### Operating

**Dimensions** Phaser 6300N / 6300DN / 6350DP: Width: 429 mm, Height: 457 mm, Depth: 580 mm, Weight: 35 kg., Phaser 6350DT: Width: 429 mm, Height: 580 mm, Depth: 580 mm, Weight: 41.4 kg., Phaser 6350DX: Width: 429 mm, Height: 798 mm, Depth: 580 mm, Weight: 55.6 kg.

**Environment** Temperature: Storage: 0° to 35° C, Operating: 5° to 32° C, Relative Humidity: Storage: 15% to 85% RH, Operating: 15% to 85% RH, Noise Level: Printing: 6.95 B (55 dBA), Standby: 5.3 B (35 dBA)

## SUPPLIES AND OPTIONS

### Consumables

**Phaser 6300/6350 Standard-Capacity Toner Cartridges**  
Cyan (4,000 pages\*) 106R01073  
Magenta (4,000 pages\*) 106R01074  
Yellow (4,000 pages\*) 106R01075  
Black (4,000 pages\*) 106R01076

**Phaser 6300 High-Capacity Toner Cartridges**  
Cyan (7,000 pages\*) 106R01082  
Magenta (7,000 pages\*) 106R01083  
Yellow (7,000 pages\*) 106R01084  
Black (7,000 pages\*) 106R01085

**Phaser 6350 High-Capacity Toner Cartridges**  
Cyan (10,000 pages\*) 106R01144  
Magenta (10,000 pages\*) 106R01145  
Yellow (10,000 pages\*) 106R01146  
Black (10,000 pages\*) 106R01147

\*capacities are approximate, based on 5% coverage on an A4-size page

### Routine Maintenance Items

Imaging Unit (up to 35,000 pages) 108R00645  
Transfer Roller (up to 35,000 pages) 108R00646  
110 Volt Fuser (up to 100,000 pages) 115R000  
220 Volt Fuser (up to 100,000 pages) 115R00036

### Options

Productivity Kit 097S03374  
(Includes Personal Print, Secure Print, Proof Print, Disk Collation and Extended Font Storage with hard drive)

256 MB Memory DIMM 097S03381  
512 MB Memory DIMM 097S03382  
550-sheet Feeder Tray 097S03378  
1100-sheet High-Capacity Feeder 097S03379  
Supplies Economy Pack 097S03375

## OUTSTANDING MEDIA CAPABILITY

Take full advantage of the new **Phaser 6300/6350** colour printers with our comprehensive Xerox Paper and Specialty Media portfolio, which includes a selection of papers, labels and transparencies that come in a variety of weights and sizes. For a current listing of all recommended printing media visit [www.xerox.com/office/6300\\_6350supplies](http://www.xerox.com/office/6300_6350supplies)

Consumables for the Phaser 6300 and Phaser 6350 are part of the Xerox Green World Alliance Supplies Recycling Program. For more information, please visit the Green World Alliance website at [www.xerox.com/gwa](http://www.xerox.com/gwa)

**Electrical Model:** 110-127 VAC, 50/60 Hz, Model: 220-240 VAC, 50/60 Hz, Consumption: Printing: 580 Watts, Standby: 120 Watts, Power Saver: 45 Watts, ENERGY STAR® qualified printer

**Regulatory** FCC Part 15, Subpart B, Listed to UL 60950 CSA-22.2 60950-00, CE Mark applicable to directives 73/23/EEC and 89/336/EEC EN 55022

### Total Satisfaction Services

One Year Onsite Warranty, online web technical support and telephone support. Innovative service offerings include optional extended Service Agreements and custom training for your internal Help Desk.



**Call today.** For more information, call **00 800 9000 9090** or visit us at [www.xerox.com/office](http://www.xerox.com/office)