

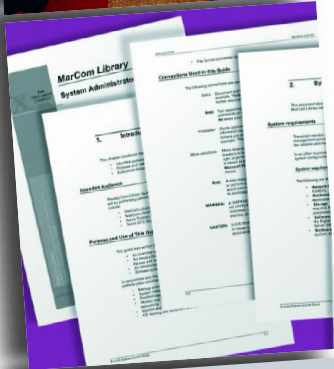
Power and Performance within reach.



Office machines

with the tools to **succeed.**

Meet the CopyCentre® C20 digital copier, WorkCentre® M20 and WorkCentre® M20i copier-printers: our newest business class machines. They perform basic office tasks with intelligence, provide high-level performance, day in day out, and sit comfortably on a desktop.



Extremely simple to use

Intuitive, easy to operate and incredibly convenient. Start with straightforward copy features that are simple to use or choose the additional functionality of network printing, fax and scan-to-email capabilities.

- Easy to use walk-up copying
- Interface is easy to understand at a glance. Press a few buttons and your task is complete
- High-quality printing on a wide range of media
- Simple print drivers for fast installation and instant productivity (M20/M20i)
- Powerful faxing in colour or black and white (M20i)
- Scan in colour or black and white (M20/M20i)
- Simple scanning direct to PC through USB connection (M20/M20i)

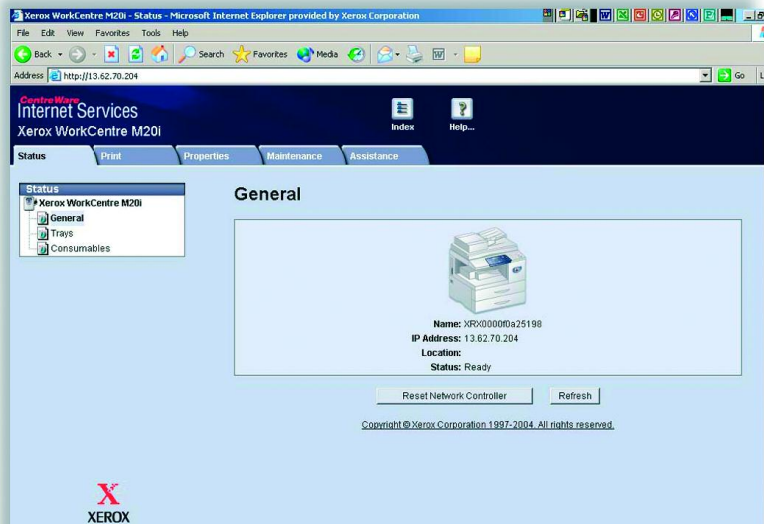
Extra smart design

Intelligent design and thoughtful feature set reduces the effort devoted to basic office tasks.

- Print directly from your network – or from the Internet (networked models*)
- Capable of feeding from multiple paper trays
- Scan to email addresses with ease (networked models*)
- Optical Character Recognition (OCR) and Image Editing Software are included to convert scanned images into editable text documents (M20/M20i)
- Xerox ControlCentre™ 5.0 lets you monitor fax usage, enter phonebook data and more – right from your PC (M20i)
- Remote device management tools available to easily monitor, manage and control networked devices (networked models*)

*Networked models include M20i plus M20 with optional network accessory kit

CentreWare IS gives your entire network access to WorkCentre M20i features.



The simple, intuitive control panel design of the CopyCentre C20 and the WorkCentre M20/M20i makes them easy to use. Many features are accessible with the touch of a single button.

Copy, fax and scan to email functions available through easy access buttons.

LCD panel shows job and machine status.

Separate button displays job status in LCD window.

Alpha-numeric keypad supports fax features.



Image shown is the M20i control panel

Convenient keyboard for scanning to email.

Frequently used features such as collate, reduce/enlarge, lighten/darken are controlled by separate buttons.

Select two-sided copying with just one button push.

Device status display shows whether the system is ready or needs attention.

Excellent performance

CopyCentre C20 digital copier and WorkCentre M20 and WorkCentre M20i copier-printers come packed with a full range of high-performance features:

- 21 ppm speeds
- Automatic two-sided printing and copying saves paper and produces more professional looking documents
- Ultra-fast 33.6Kbps fax transmission with 16MB of fax memory (M20i)
- Scan-once-print-many reliability and productivity
- Electronic collation saves time by eliminating manual sorting

- 100-sheet bypass tray supports envelopes, transparencies and special media
- Optional second paper tray increases capacity to 1,200-sheets



WorkCentre M20i

Rock-solid reliability.

The Xerox name is synonymous with quality, innovation and service. It also means day in day out reliability. CopyCentre C20 digital copiers and WorkCentre M20/M20i copier-printers are extremely durable and designed and built to perform flawlessly in today's high-speed, high-pressure office environments.

Security

With WorkCentre M20/M20i, you stay in control. They offer network device access protection that's safe and flexible. In addition, the fax capabilities on the M20i include a secure fax mode, so sensitive information prints out only when you want it to.



CopyCentre® C20 / WorkCentre® M20 / M20i



Second Paper tray Option

CONFIGURATIONS	CopyCentre® C20	WorkCentre® M20	WorkCentre® M20i
Copy/Print			
Speed		21 ppm	
First copy out time		< 8 seconds	
Resolution	600 x 600 dpi	up to 1200 dpi	
Processor	N/A	32-bit RISC processor with video controller functionality	
Connectivity	N/A	USB 2.0, Parallel	USB 2.0, Parallel, 10/100 BaseT Ethernet
Scan			
Resolution	N/A	600 x 600 dpi, 4800 dpi interpolated	
Scan-to-email	N/A	optional	standard
Fax			
Speed	N/A	N/A	33.6 Kbps
Resolution	N/A	N/A	presets up to 400 x 400 dpi
Paper Handling			
Automatic 2-sided		Standard	
Paper input capability		550-sheet Standard Tray, 100-sheet Bypass Tray	
Paper output		250-sheet Output Tray	
Productivity			
Standard features		50-sheet Duplex Automatic Document Feeder, Scan-Once-Print-Many Electronic pre-collation	
			Network printing, Scan-to-Email, Remote Device Management Tools
Optional accessories		550-sheet Tray, Foreign Device Interface Kit	
		Optional Network Accessory Kit	
Duty cycle		Up to 20,000 pages per month	

SPECIFICATIONS

Copying

Speed: 21 copies per min.
Resolution: 600 x 600 dpi
First Copy Out: < 8 seconds
Full Duplex: Yes (1-2, 2-2, 2-1)
Reduce/Enlarge
Platen: 25 – 400% in 1% increments
DADF: 25 – 100% in 1% increments
Productivity: Scan Once Print Many, Electronic Pre-Collation standard
Multiple Copies: Up to 999 copies of multiple page originals

Printing (M20, M20i)

Technology: Laser black and white
Speed: 21 ppm
Resolution: 600 x 600 dpi; 1200 x 1200 dpi interpolated
First Print Out: < 9 seconds
Two-Sided: Yes
Page Description Language (PDL): PCL6 emulation Standard; PostScript 3 printing support (Network products)
Print Drivers: Windows 98/NT4.0/2000/Me/XP, MAC OS
Interfaces: USB 2.0 standard on M20 and M20i (USB cable included); Parallel Port, IEEE 1284, 10/100baseT Ethernet standard on M20i, optional on M20

Scan (M20, M20i)

Compatibility: TWAIN standard
Technology: Direct Connect to PC (USB); Parallel Port, IEEE 1284
Scan Resolution:
Optical Resolution: 600 x 600 dpi
Interpolated Resolution: 4800 dpi
Pre-scan: 75 dpi
Depth:
Black and white: 1 bit
Text and Halftone: 20 bit
Colour: 60 bit
Scan Driver: TWAIN Standard
Bundled OCR Software: PaperPort SE 9.0, OmniPage SE v2.0
Two-Sided: Yes

Faxing (M20i)

Transmission Speed: 3 seconds per page
Communication Mode: Half Duplex
Modem Speed: 33.6 Kbps
Data Compression: JBIG, MMR/MR/MH (JPEG for colour fax transmission)
Resolution: pre-sets up to 400 x 400 dpi
Fax Memory: 16 MB
Dialing
Speed Dials Up to 200 locations
Group Dials Up to 199 supported
Fax Features
Halftones: 256 levels
Colour Fax Tx/Rec: Yes/No
Secure Fax: Receive Mode, secure mailbox
Battery Backup: Up to 100 hours when fully charged

Email (M20i, Optional M20)

Scan to SMTP addresses
Local user access and authentication
Device network access and authentication
Guest mode access is available
Network address list search via LDAP

Accessories

Network Accessory Kit (M20) (customer installable)
Adds 32MB Memory, Ethernet NIC, PostScript®3 printing support, Email Keyboard, and applicable software and documentation
Second Paper Tray
Foreign Device Interface Kit (Service Install)

Media Handling

Input Paper Capacity
Standard Tray: 550 sheets, optional second tray (550 sheets)
Bypass Tray: 100 sheets
Document Handler: 50 Sheets

Paper Size

Minimum: 127 x 176 mm
Maximum: 216 x 356 mm

Paper Weight

Standard Tray: 60 – 90 gsm
Bypass Tray: 60 – 163 gsm
Document Handler: 50 Sheets
Output Tray Capacity: 250 Sheets
Media Types: Paper, envelopes, labels, transparencies

Physical Dimensions (WxDxH):

540 x 441 x 488 mm
540 x 441 x 619 mm with Second Paper Tray
Weight: 26 kg; 30 kg with Second Paper Tray

Electrical

Power Switch: Yes
Power: 110 VAC, 50/60 Hz or 220 VAC 50/60 Hz
Power Consumption:
Average: 450 watts
Power Saver Mode: 35 watts
Energy Saver: ENERGY STAR® Compliant

Operating Environment

Temperature

Maximum Range 10° – 32°C
Recommended Range 16° – 30°C

Humidity

Maximum Range 20 – 80%
Recommended Range 30 – 70%
Device Memory: C20: 32 MB, M20: 32 MB, M20 (with Network Accessory Kit): 64 MB, M20i: 80 MB
Device Management: ControlCentre™ 5.0, CentreWare Internet Services (Networked Products) CentreWare Web, CentreWare DP, NDPS and HP Openview

Supplies

Approximate Yields

Toner Customer Replaceable Unit (CRU) – Starter kit: 4,000 images*; Replacement kit: 8,000 images
Drum Cartridge Customer Replaceable Unit (CRU) – 20,000 images*
*Capacities are approximate, based on 5% coverage on an A4-sized page

Agency Approvals

Safety: UL Safety
CSA Safety

The CopyCentre C20 and WorkCentre M20/M20i are designed to be customer-installable solutions.

