

you can
Canon

BUBBLE JET PRINTER

PIXMA iP5000

The next-generation printer
for users who want more.

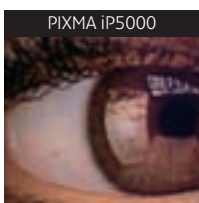


OFFICIAL SUPPLIER

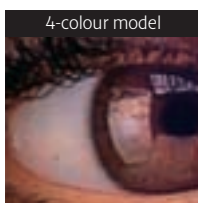
Experience breakthrough photo quality perfection.



With a stylish exterior and truly stunning performance, the high specification PIXMA iP5000 is the printer of choice for discerning users. It delivers ultimate photo quality printing thanks to super fine 1pl ink droplets, an industry-first. Plus you benefit from astonishing print speeds and a rich array of features - all in an eye-catching, economical and space-saving unit.



Using 1pl ink droplets



Using 2pl ink droplets



THE ULTIMATE LEVEL FOR PHOTO PRINTING

Benefit from unsurpassed precision colour printing, delivering exceptional colour accuracy and image clarity. Canon's FINE* print head utilises Micro-Nozzles to eject industry-first 1pl ink droplets - the smallest ever - to achieve remarkable detail, with a 9600 x 2400 dpi¹ resolution. What's more, unique ContrastPLUS technology uses an additional black ink to give extra contrast and colour depth to all your prints. The end result is ultra professional photo printing whenever you want it.

¹ Full-photolithography Inkjet Nozzle Engineering



AMAZINGLY ADVANCED

The compact PIXMA iP5000 printer packs more features into less space. An integral duplex unit provides two-sided printing to cut your paper costs considerably. Dual paper trays, that fold away neatly, allow easy multi-path feeding for both photo and plain paper. Plus you can print designs directly onto compatible CD-R and DVD disks, giving a smart and professional finish.



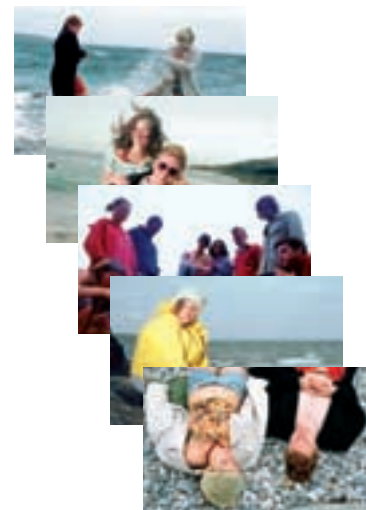
EASY CAMERA DIRECT PRINTING

Print stunning photos directly from your camera - quickly, easily and without even using a computer. The PIXMA iP5000 supports PictBridge, the universal standard for direct photo printing from all compatible digital cameras and camcorders. So you can share great borderless prints moments after your photos are taken.



ACCELERATED PRINT SPEEDS

Breathtaking print speeds bring outstanding productivity to all your printing tasks, without sacrificing quality. Print at up to 25 pages per minute in mono and 17 ppm in colour. Or enjoy rapid borderless printing on 10 x 15 cm, 13 x 18 cm and A4 sizes. For example, you can produce a beautiful 10 x 15 cm borderless print in only 36 seconds.



ECONOMICAL SINGLE INK SYSTEM

Transparent ink tanks for all five colours can be replaced individually, reducing your costs significantly. See at a glance when a single tank needs replacing, while an intelligent ink detection system ensures you minimise ink wastage.

CREATIVE SOFTWARE SOLUTIONS

A range of software solutions simplify printing, improve quality and expand your creative horizons. Format and print internet pages at the touch of a button, without losing the edge of the page, using Easy-WebPrint. Easy-PhotoPrint brings the same simplicity to photo printing, to enhance your digital photos. Produce a fantastic photo album with PhotoRecord - or create great CD and DVD designs using CD-LabelPrint

WINDOWS & MAC COMPATIBLE




The PIXMA iP5000 works with all popular Windows and Macintosh operating systems, with convenient USB connectivity. Easy to install and easy to operate, this whisper-quiet printer delivers breakthrough photo quality printing and speed in one.



Specifications PIXMA iP5000

Resolution	Up to 9600 ¹ x 2400 dpi
Print engine	5-ink with 1 pl Micro-Nozzles and FINE
Colour management	ICM, ColorSync, Exif Print
Mono print speed	Up to 25 ppm (Max), 15 ppm (Std)
Colour print speed	Text & Graphics: Up to 17 ppm (Max), 11 ppm (Std); A4 Full Page: Up to 2.3 ppm (Std)
Photo print speed	A4: Up to 0.86 ppm (Max) Borderless 10 x 15 cm: approx. 36 seconds (Max)
Media type	Plain Paper, Envelopes, Photo Paper Pro (PR-101), Photo Paper Plus Glossy (PP-101), Photo Paper Plus Double Sided (PP-101D), Photo Paper Plus Semi-gloss (SG-101), Glossy Photo Paper (GP-401), Matte Photo Paper (MP-101), High Resolution Paper (HR-101N), Transparency (CF-102), T shirt Transfer (TR-301), Photo Stickers (PS-101)
Media weight	Sheet feeder: 64 to 105 g/m ² and supported Canon special media up to 273 g/m ²
Media input	Sheet feeder: 150 sheets Cassette: 150 sheets CD-R / DVD tray: 1 printable CD-R or DVD
CD-R printing	Available as standard
Media size	Sheet feeder: A4, B5, A5, Letter, Legal, Envelopes (DL size or Commercial 10), 10 x 15 cm, 13 x 18 cm, Credit Card (54 x 86 mm) Cassette: A4, B5, A5, Letter, Envelopes (DL size or Commercial 10), 10 x 15 cm, 13 x 18 cm
Borderless printing	Available using Photo Paper Pro, Photo Paper Plus Glossy, Photo Paper Plus Double Sided, Photo Paper Plus Semi-gloss, Glossy Photo Paper or Matte Photo Paper in A4, 10 x 15 cm 13 x 18 cm & Credit Card sizes
Two sided printing	Available using Photo Paper Plus Double Sided or plain paper in A4, B5, A5, Letter & 13 x 18 cm sizes
Ink cartridge configuration	5 Single Inks (BCI-3eBK, BCI-6BK, BCI-6C, BCI-6M, BCI-Y)
Black ink tank life	BCI-3e BK: 330 pages at 5% coverage; BCI-6 BK ² : 440 pages at 5% coverage ² BCI-3e BK: 1500 pages, BCI-6 BK: 2000 pages (Printing ISO/JIS-SCID N5) ³
Colour ink tank(s) life	440 pages at 5% coverage per ink tank ³ Cyan: 550 pages, Magenta: 430 pages, Yellow: 360 pages (Printing ISO/JIS-SCID N5) ³
PC interface & connectivity	USB

Camera interface & connectivity	Direct Print Port: Camera direct photo printing from PictBridge & Bubble Jet Direct compliant digital cameras & camcorders Compatibility: Exif 2.21 or earlier, DPOF compliant
Camera direct printing	Windows: PC with Windows XP, Windows 2000, Windows Me or Windows 98, USB interface ⁴ , CD-ROM Drive. Free hard disk space: 50 MB for Windows XP/2000, 15 MB for Windows Me/98.
Operating system requirements	Mac: Macintosh computer with Mac OS 9.x or Mac OS X v10.2.1 or later, USB interface. Free hard disk space: 30 MB for Mac OS 9.x, 100 MB for Mac OS X v10.2.1 or later.
Driver features	Windows: Photo Optimizer PRO, Image Optimizer, Photo Noise Reduction, Vivid Photo Mac: Photo Optimizer PRO, Photo Noise Reduction, Vivid Photo
Software included	Windows: Easy-WebPrint, Easy-PhotoPrint, PhotoRecord, CD-LabelPrint Mac: Easy-PhotoPrint
Power source	AC 220-240 V 50-60 Hz
Power consumption	Approx. 16 W (printing), approx 0.65 W (standby)
Temperature range	5 - 35 °C
Humidity	10 - 90% RH (no condensation)
Acoustic noise levels	Approx. 33 dB (A) (quiet mode)
Dimensions (W x D x H)	418 x 286 x 170 mm
Weight	6.7 kg

	Mono print speed measured using this pattern		Colour print speed measured using this pattern		Ink coverage measured using this pattern
---	--	---	--	---	--

¹ Ink droplets can be placed with a minimum pitch of 1/9600inch
² Print volume figures may vary with the content of the document and the print mode. Black calculation based on an average of four printers run continuously until ink out printing 1500 characters per page, normal text, in default mode on plain paper using Windows XP and Word 2003.
³ Print volume figures may vary with the content of the document and the print mode. Colour calculation based on an average of four printers run continuously until ink out printing the ISO/JIS-SCID N5 pattern in default mode on plain paper using Windows XP and Photoshop 7.0.
⁴ USB operation can only be guaranteed on a PC with pre-installed Windows XP, Windows 2000, Windows Me or Windows 98

All specifications subject to change without notice.
 Print speeds may vary with computer system specifications and content of document printed. Microsoft, Windows and the Windows logo are trademarks, or registered trademarks of Microsoft Corporation in the United States and/or other countries. All brand and product names are trademarks of their respective companies.

Specification CEL 1.0.1 030604

OUTSTANDING PRINT QUALITY COMES WITH CANON MEDIA AND GENUINE INKS



you can
Canon

Canon Inc
www.canon.com

Canon Europa N.V.
www.canon-europe.com

English Edition xxxxx
© Canon Europa N.V., 2004 (0804)

